

VISIT *Moffat County*

COLORADO'S GREAT NORTHWEST · VISITMOFFATCOUNTY.COM

MOFFAT COUNTY TOURISM ASSOCIATION
 775 YAMPA AVENUE, CRAIG, COLORADO 81625
 (970) 824-2335 · VISITMOFFATCOUNTY.COM

**CRAIG CHAMBER OF COMMERCE AND
 MOFFAT COUNTY VISITOR CENTER**
 775 YAMPA AVENUE, CRAIG, COLORADO 81625
 (970)824-5689 · CRAIG-CHAMBER.COM



**MOFFAT COUNTY
 VISITOR CENTER**
 CRAIG-CHAMBER.COM

UNITED STATES FOREST SERVICE
 (970) 870-2299 · FS.USDA.GOV/MBR

BUREAU OF LAND MANAGEMENT LITTLE SNAKE FIELD OFFICE
 455 EMERSON STREET, CRAIG, COLORADO 81625
 (970) 826-5000 · BLM.GOV/OFFICE/LITTLE-SNAKE-FIELD-OFFICE

COLORADO PARKS & WILDLIFE
 HUNTING INFORMATION: CPW.STATE.CO.US



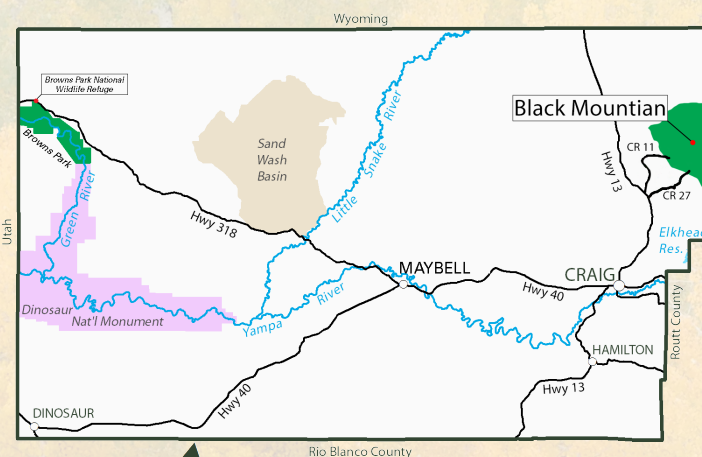
THIS BROCHURE IS PRODUCED AND DISTRIBUTED BY:



VISITMOFFATCOUNTY.COM

How to Get There

Directions: From Craig to the:
Black Mountain Road - Travel north on CO Highway 13 11.3 miles, then east on Moffat County Road 27. Continue on gravel road, which turns into Forest Road 110 at the forest boundary.
Freeman Reservoir Road - Travel north on CO Highway 13 11.7 miles, then east on Moffat County Road 11. Continue on gravel road approximately 9 miles to the Freeman Reservoir campground.



Black Mountain Self-Guided Tour

Black Mountain, located in Routt National Forest, is one of the many picturesque stops on the Black Mountain tour. Gravel Forest Service roads will take you through Lost Park, Slater Park and California Park.

The drive offers spectacular Rocky Mountain scenery from overlooks to vistas, unlimited picnicking sites and potential to view some of the more than 300 species of wildlife that inhabit the region.

The camping areas serve as ideal base camps for day hikes, hunting and fishing trips, animal observation, and inspiring panoramas in an uncrowded atmosphere.

The tour is approximately 100 miles long, and can be driven in less than five hours. You are encouraged, however, to take some time and completely appreciate this wonderful segment of the Routt National Forest.

CAUTION - Gravel roads can be muddy after heavy rain.



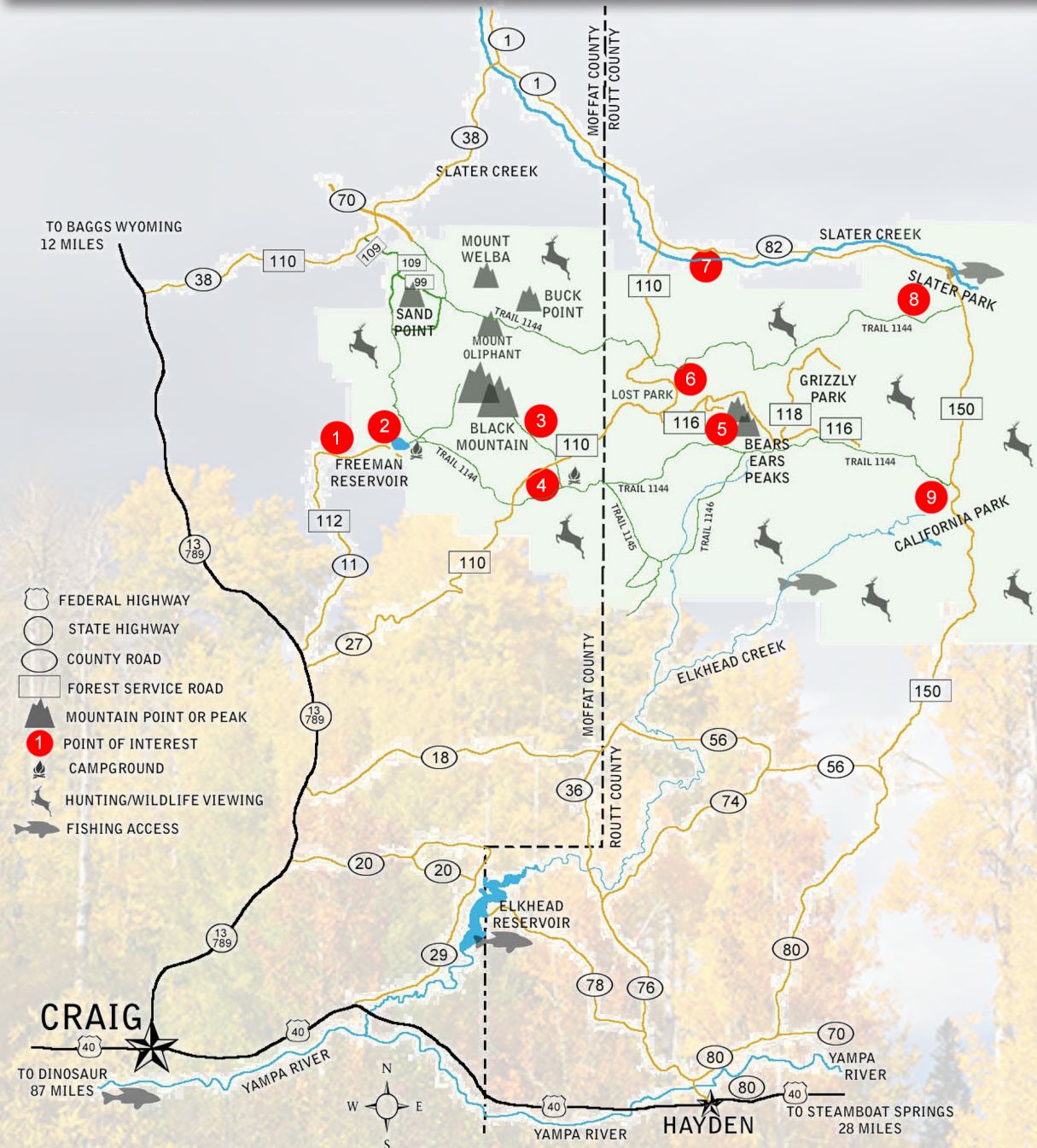
Photo Credit: Gayle Zimmerman

Visit Black Mountain



Black Mountain Tour

Visit Black Mountain
With A Self - Guided Tour



Always be aware of weather and road conditions and check for adverse driving conditions before beginning your adventure.

1. SHERMAN YOUTH CAMP & RECREATION AREA:

Located 22 miles from Craig. Area offers group camping and organizational outings. For information call (970) 824-5517

2. FREEMAN RESERVOIR: 17-acre reservoir located in Routt National Forest offers 17 campsites with restroom facilities & water, hiking, Accessible dock and trail, corrals for horses, wildlife viewing, picnicking, and good native cutthroat trout fishing (no motor boats).

3. BLACK MOUNTAIN HIKING TRAIL: A 3.5 mile hiking trail to the summit of Black Mountain (10,800'). An easy climb offering sensational views of the Yampa Valley and into Utah and Wyoming.

4. SAWMILL CAMPGROUND: Offers 6 primitive campsites (pit toilet, no water), picnicking, hiking, and a splendid view of the Yampa Valley.

5. BEARS EARS PEAK: Drive to a spectacular viewing area of the Bears Ears Peaks with a breathtaking panorama of the Yampa Valley.

6. LOST PARK & NATIONAL FOREST WORK STATION:

Scenic park offering views of surrounding mountains and access to hiking, horse trails, motorbike trails, and fishing.

7. SLATER FALLS: A 1/2 mile hike to Slater Falls, a beautiful 30 foot waterfall on Slater Creek.

8. SLATER PARK: Much of Slater Park is private lands, however, there is National Forest access to good fishing in Slater Creek and small feeder streams and ponds in the area. There are marked trails for hiking, horseback riding, and motor biking.

9. CALIFORNIA PARK: Beautiful 8,000 acre park. The park is known for big game hunting and miles of mountain streams that are stocked for trout fishing. The area offers areas for dispersed camping, fishing and spectacular park and mountain scenery. Area Closed to motor vehicle use from May 15 to July 1 each year to protect Colorado's largest population of Greater Sandhill Cranes.



Freeman Reservoir



Top of Black Mountain



Snowmobiling



Black Mountain

Photo by Michael Cody Mack