

MAP:
This map is provided for you by the **Hahns Peak/Bears Ears Ranger District of the Medicine Bow-Routt National Forest, the Moffat County Tourism Association** and the **Northwest Colorado Snowmobile Club**. This map is intended for the enjoyment and safety of the user. This map may be downloaded to your electronic device using the QR code on the map. For georeferencing capability the free app Avenza Maps must be used.

LOCATION:
The Northwest Colorado Snowmobile trail system is located in the Hahns Peak/Bears Ears Ranger District of the Medicine Bow-Routt National Forest. Three trailheads provide parking and access to the trail system and all three trailheads are 1 to 2 miles east of Colorado Highway 13, and 10, 11 and 25 miles north of Craig, Colorado. The maintained trails lead into the Black Mountain and California Park areas of the Elkhead Mountain range.

AREA DESCRIPTION:
Trail elevations range from approximately 7000 to over 10,000 feet, with snow depths of 4 to 10 feet from late December through April. The area has a wide variety of terrain and scenery, including steep mountains, stands of Spruce, Fir and Aspen trees, scenic overlook points of the Yampa Valley and mountainous terrain. At the lower elevations, the trails pass through many large open parks and meadows, and over gently rolling hills. Most wildlife is located below the 8,000 feet elevation during the winter months. Elk, deer and antelope can often be seen in the fields along CO HWY 13 and the country leading to the trailheads. **Portions of the trail system pass through private lands. Please respect private property rights and stay on the groomed trails in these areas.**

TRAILS:
The trail system is marked and maintained by volunteers from the **NORTHWEST COLORADO SNOWMOBILE CLUB**. Funds for equipment, fuel and signage come from **Colorado Parks and Wildlife** through snowmobile registration. The trail system offers excellent snowmobiling opportunities for riders of all ages, from beginner to expert. Approximately 111 miles of trails are maintained on county roads and forest routes. Trails are well marked and cleared, and **"YOU ARE HERE"** signs are located at trail intersections for rider reassurance. On the map, trails considered to be **"Advanced Riders"** are identified as red-black dashed lines and trails subject to adverse wind conditions that may cause white-out conditions are identified with green-black dashed lines. However, changing weather conditions such as heavy and sudden snowfall, wind and drifting snow can temporarily increase the difficulty of even the best trails, and we urge all riders to constantly exercise caution when riding mountain terrain.



A1(Black Mountain Trail) – The heart of the trail system is the **A1** trail on the Black Mountain Road, extending nearly 24 miles from Little Bear Creek, Northeast, to Slater Creek, with several intersections providing access to other riding areas. From Slater Creek, Trail **D1 (California-Slater Park Trail)** leads 16 miles East and South through Slater and California Parks. Trails **E2 (Circle Creek Trail)** and **E1 (Bears Ears Trail)** lead from California Park back to **A1** south of Lost Park Ranger Station. Riders wishing to make this long loop should always take extra fuel and be advised of current weather conditions and forecasts.



A2 (Little Bear trail) a short trail leading to an open riding area. An unmarked trail continues to the "Slim Jim" area at Taylor Creek and beyond to the Falls Creek trail.

A3 (West Prong Trail) leads to the West Prong drainage area with play areas along the way. At the end of the groomed trail, an unmarked forest route continues to the Forest Service 1144 trail, also unmarked and requires advanced riding, which leads north west to the Willow Creek Trail.

B1 (Freeman Reservoir Trail) begins at the Freeman Trailhead and goes north and east meeting trails **B2 (Fortification Trail)** and **B3 (Falls Creek Trail)** north of the Freeman Reservoir.

B2 (Fortification Trail) leads north from the **B1-B2-B3** intersection to Fern Park where it meets trails **C3 (Fern Park Trail)** and **C5 (Fern Park/Willow Creek Connector Trail)** passing by the Fortification Headwaters trail exit, **C2 (Willow Creek Trail)**.

B3 (Falls Creek Trail) goes east from **B1-B2-B3** intersection passing by the "Slim Jim" area at Taylor Creek and then intersect with the **A1 Trail (Black Mountain Trail)** system.

C1 (Wilderness Ranch Trail) begins at the Wilderness Ranch Trailhead, 25 miles North of Craig. Heading east it winds its way through private properties. This trail allows one to access trail **C3 (Fern Park Trail)** or continue on through Wilderness Ranch and connect to trail **C4 (Slater Creek)**

EYECARE SPECIALTIES
CRAIG T. ECKROTH, O.D.
DIPLOMATE, AMERICAN BOARD OF OPTOMETRY
460 Pershing St. Ste. 100, Craig, CO 81625
Phone: 970-824-3488 Fax: 970-824-8132
365 Angler's Drive, Ste. A, P.O. Box 881359, Steamboat Springs, CO 80488
Phone: 970-879-2020 Fax: 970-879-4809
WWW.EYECARE-SPECIALTIES.COM

DEFINITIVE OPTIMIZATION U.S.A.
Plunger Lift & Optimization Specialists
ROB ALBERT Phone: (307) 747-0015
rob.albert@delopt.com www.delopt.com
PO BOX 1308, PINEDALE, WY 82841

Jay Oxyley
1820 West Victory Way
Craig, Co 81625
E jayt@bresnan.net
T 970.824.4945 F 970.824.7531
ticarpetonecraig.com
ELEGANT CARPET ONE FLOOR AND HOME FLOOR HOME

A&E TIRE INC.
Complete Truck Tire Centers
378 E 1st St
Craig, CO 81625
970.824.0237
O: 970.824.0237
M: 970.819.4243
F: 970.824.5578
jherger@setire.com

Cramer Flooring
With over 30 Years Experience in Sales and Installation
We Specialize in Customer Satisfaction
Tom & Jessie Cramer
Owners
970.824.1348/Fax
970.629.5149/Cell
jcramer33@msn.com
37 E Victory Way
Craig, Co. 81625

COME SEE US FOR ALL YOUR GLASS NEEDS
AUTO • RESIDENTIAL • COMMERCIAL
BLACK MOUNTAIN GLASS
RALPH STEWART Owner/Operator
75 EAST 4TH STREET
CRAIG, COLORADO 81625 (970) 824-5353
EMERGENCY 824-4198

Uncrowded. Untracked. Unbelievable.
Ride in/out cabin with 230,000+ acres of snowmobiling
90 minutes from Steamboat Springs, CO/Rabbit Ears Pass
Info at: www.WildSkies.com or 970-926-0216
Featured in SnoWest Magazine (Dec. 2014)

Northwest AUTO
970.378.5026 phone
970.876.3171 fax
425 Market St.
Merker, Colo.
81641
SALES & SERVICE
www.nwauto.net
Complete Automotive Service
Tire Sales and Repairs
24 Hour Towing
Rental Cars

CRAIG POWERSPORTS
SETH HERGENRETER
SETHHERGEN@CRAIGPOWERSPORTS.COM
P: 970.826.0060 2607 E. HIGHWAY 40
E: 970.826.0077 CRAIG CO 81625

BW Best Western PLUS
Kerry Moe
Governor District 1 - Region 24
deerparkinn@bresnan.net
Deer Park Hotel & Suites
262 Commerce St. (Hwy 13)
Craig, CO 81625
P: (970) 824-9282
F: (970) 824-3926
Reservations: 1 (800) 528-1234
bestwestern.com

VALLARTA'S
2705 W. Victory Way
970.824.9812

Distributors of Fine Petroleum Products
MAPCO
MASTER PETROLEUM Co.
P.O. BOX 66, SILT, COLORADO 81652
Office (970) 876-2301
Fax (970) 876-2307

MOUNTAIN STATES COMPANY
ELECTRICAL CONTRACTORS
424 Russell Street - Craig, Colorado 81625
Greg Bauer (970) 824-6568
Cell (970) 620-6049

MJK sales & feed, inc.
2315 West 1st Street Craig, CO 81625
Lorraine Kawcak
Manager/Buyer
Email: lorraine.mjk@gmail.com
PHONE: (970) 824-6581
CELL PHONE: (970) 629-5809
FAX: (970) 824-6585

THE COPY SHOP **TOSHIBA**
Computer Corner COPY * FAX * PRINT
99 E. 4th Street, Craig CO 81625
Business Equipment Sales, Service, Supplies
Color copies - Faxing - Business Cards
Scott McKinney, Owner
scott@craigcopyshop.com (970) 824-4758
www.craigcopyshop.com Fax (970) 824-1712

AXIS STEEL INC
STEEL FABRICATION RECYCLING
CHRIS THOME
970.824.3256
970.824.3199
970.824.3900

COOK
Chevrolet - Subaru - Ford
Scott Cook
1776 W Victory Way
Craig, CO 81625
970.824.2100
W. US Hwy 40
Steamboat Springs
970.879.3900
W. US Hwy 40
Steamboat Springs
970.879.3900
www.CookChevrolet.com

A-1 Rooter, Inc.
The affordable solution for your drain needs
Nigel Rogers
Owner
(970) 629-0329
The best price in the Yampa Valley

THE Other Place BAR & GRILL
CRAIG, COLORADO
Delbert & Diana Kneez
534 East Victory Way
Craig, Colorado 81625
(970) 824-8918
Cell: 629-8689

Kirk McKey DC
Clinic Hours
Mon. 8-12 & 2-5
Tue. 8-12 & 2-5
Wed. 8-12 & 2-5
Thurs. 8-12
Fri. 8-12 & 2-5
(970) 824-4444
469 Breeze St.
Craig, CO 81625
DOT Physicals
Drug & Alcohol Testing

NAPA
T&H PARTS
John Ponikvar
President
Call 970 326 8238
Home 970 824 5694
jponikvarnapa@gmail.com
400 Taylor Street
Craig, CO 81625
Shop 970 824 3496
Fax 970 824 8705
thparts@bresnan.net
thparts.com

LUBE PLUS
Candi Kawcak Miller
970-824-3690
Dan 970 846 4348
MON-FRI: 8:30-6
SAT: 8:30-3
317 West Victory Way - Craig, Colorado 81625

C3 (Fern Park Trail) runs south from the **C1** trail onto Forest Service lands and connects to the "B" trail system, out of the Freeman trailhead, in Fern Park.

C2 (Willow Creek Trail) provides the rider with access to the Willow Creek and Black Mountain areas and provide access to excellent play and scenic areas. Expect to find oneself in good powder riding with good areas to explore for the adventurous, just off the trail.

C5 (Fern Park/Willow Creek Connector Trail) connects the **B2/C3** trails with the **C2** trail forming a loop trail.

C6 (Alternate Trail) is an alternate trail within the **C2** trail.

C4 (Slater Creek Trail) is a connecting trail going up the Slater Creek Canyon to trails **A1** and **D1**. Early winter and late spring may find this segment of the trail devoid of snow. The sun elevates temperatures in the canyon and melts the snow, so one may have to backtrack on either **C1** or **A1** trail.

D1 (California - Slater Park Trail) winds through the California Park and Slater Park areas and is accessed by the **E2** trail from the west or by the **A1** trail from the south. Vast areas are available for any type of riding and for any skill level of rider. **Weather conditions must always be a concern** as high wind conditions and blowing snow, causing whiteout conditions, may be encountered. This trail provides an opportunity to view many scenic landmarks such as Sawtooth Peak, Columbus Mountain, Slater Peaks, Sugar Loaf, Saddle Mountain, and Meaden Peaks. This trail intersects the Steamboat Lake trail system at FDR 42 (point 15), just before entering Slater

Park from the South or California Park from the North.

E1 (Bears Ears Trail) – From its intersection with the **A1** Trail (**Black Mountain Trail**), this trail passes through the historic "Sunday Burn" fire of 1962, and provides an excellent view of the north side of the Bears Ears Peaks, for which part of this Ranger District is named. Intersecting trails make possible several different loop rides into the California Park and Grizzly Park areas. This is a great trail for working the trees and finding good powder riding as one works his way along the ridges.

E2 (Circle Creek Trail) is an extension of the **E1** trail which is a scenic ride through Aspen and Pine growth, opening up into California Park and connecting to the **D1** trail forming a loop which will return you to the **A1** trail (**Black Mountain Trail**).

E3 (Grizzly Park) is a short trail leading the snowmobiler to Grizzly Park for great open park riding. This also gives one access to the Douglas Creek drainage for excellent snowmobiling with some hill climbing opportunities and plenty of powder snow.

E4 (Bears Ears Trail) is a short trail leading to a scenic overlook and unmarked trails.



SNOWMOBILE SAFETY TIPS

1. Never travel alone.
2. Tell someone your destination, route, and when you plan to return.
3. Don't drink and ride.
4. Slow down, especially at night.
5. Keep to the right when trail riding.
6. Watch for skiers, snowshoers and dogsleds.
7. Use caution when crossing lakes and streams.
8. Dress appropriately and wear a helmet.
9. Respect private property.
10. Be familiar with your snowmobiles-carry extra sparkplugs, drive belts, tool kits and a tow rope.
11. Carry a survival kit with maps, compass, flashlight, extra food and clothing, sunglasses, first aid kit, pocket knife, waterproof matches, candles or other fire starters, space blanket and folding saw.
12. Watch for trail grooming equipment. When trying to pass or approaching, stay back from the groomer until one receives a signal from the trail groomer to pass.

IN EMERGENCY CALL 911
MOFFAT COUNTY SHERIFF - CRAIG, CO
(970) 824-6501
ROUTT COUNTY SHERIFF - STEAMBOAT SPRINGS, CO (970) 879-1090

THESE MARKED AND GROOMED TRAILS ARE A PRODUCT OF SNOWMOBILE REGISTRATION AND VOLUNTEERS. DO YOUR PART AND REGISTER YOUR SNOWMOBILE(S) WITH THE COLORADO PARKS AND WILDLIFE. REMEMBER: TREAD LIGHTLY AND IF YOU CAN CARRY IT IN, YOU CAN CARRY IT OUT. THANK YOU FOR YOUR COMMITMENT TO SAFETY AND THE SPORT OF SNOWMOBILING!

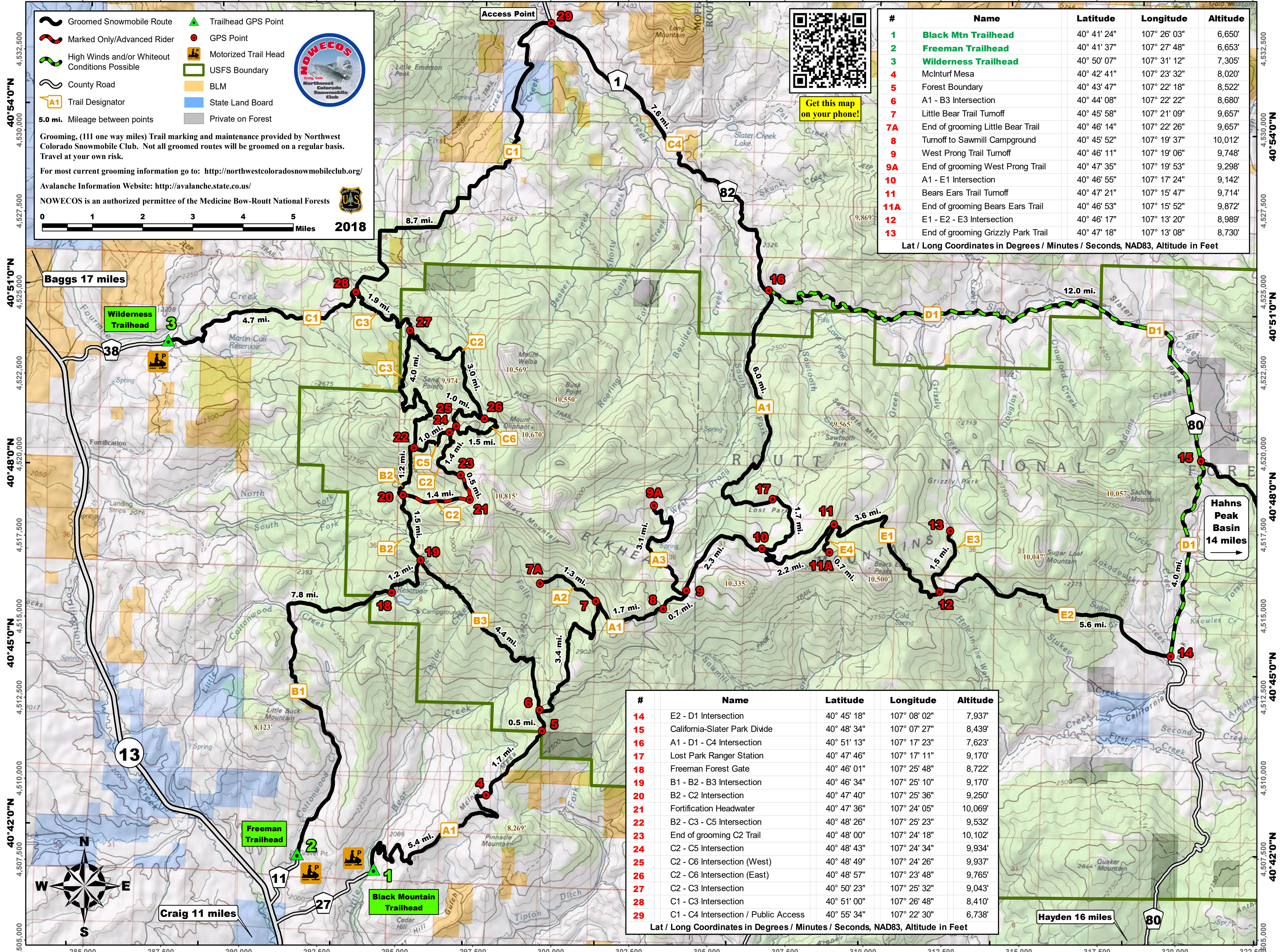
Snowmobile Colorado's Great Northwest

COMPLIMENTS OF
NORTHWEST COLORADO
SNOWMOBILE CLUB
AND MOFFAT COUNTY
TOURISM ASSOCIATION

For Area information call: 970.824.2335

Visit Moffat County
EST. 1911
COLORADO'S GREAT NORTHWEST
VISITMOFFATCOUNTY.COM

107°33'0"W 285,000 107°30'0"W 287,500 107°27'0"W 290,000 107°24'0"W 292,500 107°21'0"W 295,000 107°18'0"W 297,500 107°15'0"W 300,000 107°12'0"W 302,500 107°9'0"W 305,000 107°6'0"W 307,500 107°3'0"W 310,000 107°0'0"W 312,500 107°33'0"W 315,000 107°30'0"W 317,500 107°27'0"W 320,000 107°24'0"W 322,500



Legend

- Groomed Snowmobile Route
- Marked Only/Advanced Rider
- High Winds and/or Whiteout Conditions Possible
- County Road
- Trail Designator
- 5.0 mi. Mileage between points
- Trailhead GPS Point
- GPS Point
- Motorized Trail Head
- USFS Boundary
- BLM
- State Land Board
- Private on Forest

Trailhead Information

Grooming, (111 one way miles) Trail marking and maintenance provided by Northwest Colorado Snowmobile Club. Not all groomed routes will be groomed on a regular basis. Travel at your own risk.

For most current grooming information go to: <http://northwestcoloradosnowmobileclub.org/>
 Avalanche Information Website: <http://avalanche.state.co.us/>

NOWECOS is an authorized permittee of the Medicine Bow-Routt National Forests

2018



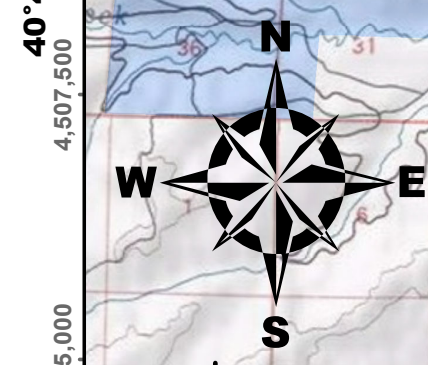
Get this map on your phone!

#	Name	Latitude	Longitude	Altitude
1	Black Mtn Trailhead	40° 41' 24"	107° 26' 03"	6,650'
2	Freeman Trailhead	40° 41' 37"	107° 27' 48"	6,653'
3	Wilderness Trailhead	40° 50' 07"	107° 31' 12"	7,305'
4	McInturf Mesa	40° 42' 41"	107° 23' 32"	8,020'
5	Forest Boundary	40° 43' 47"	107° 22' 18"	8,522'
6	A1 - B3 Intersection	40° 44' 08"	107° 22' 22"	8,680'
7	Little Bear Trail Turnoff	40° 45' 58"	107° 21' 09"	9,657'
7A	End of grooming Little Bear Trail	40° 46' 14"	107° 22' 26"	9,657'
8	Turnoff to Sawmill Campground	40° 45' 52"	107° 19' 37"	10,012'
9	West Prong Trail Turnoff	40° 46' 11"	107° 19' 06"	9,748'
9A	End of grooming West Prong Trail	40° 47' 35"	107° 19' 53"	9,298'
10	A1 - E1 Intersection	40° 46' 55"	107° 17' 24"	9,142'
11	Bears Ears Trail Turnoff	40° 47' 21"	107° 15' 47"	9,714'
11A	End of grooming Bears Ears Trail	40° 46' 53"	107° 15' 52"	9,872'
12	E1 - E2 - E3 Intersection	40° 46' 17"	107° 13' 20"	8,989'
13	End of grooming Grizzly Park Trail	40° 47' 18"	107° 13' 08"	8,730'

Lat / Long Coordinates in Degrees / Minutes / Seconds, NAD83, Altitude in Feet

14	E2 - D1 Intersection	40° 45' 18"	107° 08' 02"	7,937'
15	California-Slater Park Divide	40° 48' 34"	107° 07' 27"	8,439'
16	A1 - D1 - C4 Intersection	40° 51' 13"	107° 17' 23"	7,623'
17	Lost Park Ranger Station	40° 47' 46"	107° 17' 11"	9,170'
18	Freeman Forest Gate	40° 46' 01"	107° 25' 48"	8,722'
19	B1 - B2 - B3 Intersection	40° 46' 34"	107° 25' 10"	9,170'
20	B2 - C2 Intersection	40° 47' 40"	107° 25' 36"	9,250'
21	Fortification Headwater	40° 47' 36"	107° 24' 05"	10,069'
22	B2 - C3 - C5 Intersection	40° 48' 26"	107° 25' 23"	9,532'
23	End of grooming C2 Trail	40° 48' 00"	107° 24' 18"	10,102'
24	C2 - C5 Intersection	40° 48' 43"	107° 24' 34"	9,934'
25	C2 - C6 Intersection (West)	40° 48' 49"	107° 24' 26"	9,937'
26	C2 - C6 Intersection (East)	40° 48' 57"	107° 23' 48"	9,765'
27	C2 - C3 Intersection	40° 50' 23"	107° 25' 32"	9,043'
28	C1 - C3 Intersection	40° 51' 00"	107° 26' 48"	8,410'
29	C1 - C4 Intersection / Public Access	40° 55' 34"	107° 22' 30"	6,738'

Lat / Long Coordinates in Degrees / Minutes / Seconds, NAD83, Altitude in Feet



107°33'0"W 285,000 107°30'0"W 287,500 107°27'0"W 290,000 107°24'0"W 292,500 107°21'0"W 295,000 107°18'0"W 297,500 107°15'0"W 300,000 107°12'0"W 302,500 107°9'0"W 305,000 107°6'0"W 307,500 107°3'0"W 310,000 107°0'0"W 312,500 107°33'0"W 315,000 107°30'0"W 317,500 107°27'0"W 320,000 107°24'0"W 322,500